

SAMUEL COURTAULD SOCIETY
THE COURTAULD INSTITUTE OF ART
EVENTS: FEBRUARY TO JUNE 2009

WELCOME TO THE NEW SAMUEL COURTAULD SOCIETY EVENTS PROGRAMME. COMING UP WE HAVE A NUMBER OF EXCLUSIVE EVENTS WHICH DRAW ON THE EXPERTISE OF THE COURTAULD'S FACULTY, CURATORS AND ALUMNI, AS WELL AS THE EXCELLENCE TO BE FOUND IN OUR COLLECTIONS AND EXHIBITIONS. SOME EVENTS FOCUS ON PROGRAMMES SUPPORTED BY YOUR DONATIONS THROUGH THE SAMUEL COURTAULD SOCIETY, SUCH AS THE EXHIBITION *BEYOND BLOOMSBURY: DESIGNS OF THE OMEGA WORKSHOPS 1913-19*. OTHER EVENTS INCLUDE BEHIND-THE-SCENES VISITS TO MUSEUMS AND COLLECTIONS ACCOMPANIED BY COURTAULD EXPERTS TO GIVE MEMBERS A REAL INSIGHT INTO THE WORKS OF ART ON DISPLAY.

FEBRUARY

**CHAMPAGNE PRIVATE VIEW
OF LOVE AND MARRIAGE IN
RENAISSANCE FLORENCE:
THE COURTAULD WEDDING CHESTS**
**WEDNESDAY 11 FEBRUARY,
5.30 – 6.30PM**

The Courtauld Gallery
For: Patrons' Circle and Director's Circle

Patrons' Circle and Director's Circle members of the Samuel Courtauld Society have an exclusive viewing of the exhibition prior to the start of the main Private View. The exhibition explores one of the most important and historically neglected art forms of Renaissance Florence: pairs of great chests which were lavishly decorated and commissioned to celebrate marriage alliances between powerful families.

**PRIVATE VIEW OF LOVE AND MARRIAGE
IN RENAISSANCE FLORENCE: THE
COURTAULD WEDDING CHESTS**
**WEDNESDAY 11 FEBRUARY,
6.30 – 8.30PM**

The Courtauld Gallery
*For: Associates, Patrons' Circle and
Director's Circle*

All members are invited to join us for Private View night and see the new exhibition before it opens to the public. Painted panels set into the wedding chests tell tales and history from ancient Greece, Rome and Palestine, as well as from Florentine literature and more recent history. These beautifully told and highly crafted pictorial narratives were intended to entertain as well as to instruct the husband and wife, their servants, children and visitors.



Made by Zanobi di Domenico; painted by Biagio d'Antonio with Jacopa del Sellaio, Morelli-Nerli Cassoni, 1472 © The Samuel Courtauld Trust, The Courtauld Gallery, London

**MEET A PAINTING:
BOTTICELLI'S HOLY TRINITY**
WEDNESDAY 18 FEBRUARY,
6.30 – 8.00PM

The Courtauld Gallery
For: Patrons' Circle and Director's Circle

An opportunity to gain a fascinating insight into a single work from The Courtauld collection. Professor Patricia Rubin, Deputy Director and Head of The Courtauld Institute of Art Research Forum, and Caroline Campbell, Schroder Foundation Curator of Paintings, will jointly discuss and debate Botticelli's Holy Trinity with Saint John the Baptist, Mary Magdalene, Tobias and the Angel.



Botticelli, *Holy Trinity with Saint John the Baptist, Mary Magdalene, Tobias and the Angel*, 1490-1495 © The Samuel Courtauld Trust, The Courtauld Gallery, London

MARCH

PRIVATE ART COLLECTION VISIT
THURSDAY 19 MARCH, 6.00 – 7.30PM

Central London venue
For: Director's Circle

Visit to the private collection of paintings and drawings of one of our Courtauld supporters.

**DIRECTOR'S BREAKFAST VIEW
OF LOVE AND MARRIAGE IN
RENAISSANCE FLORENCE:
THE COURTAULD WEDDING CHESTS**

TUESDAY 24 MARCH, 8.00 – 9.45AM
The Courtauld Gallery
For: Patrons' Circle and Director's Circle



The Master of Marradi, *The Reconciliation of the Romans and the Sabines* (detail), c. 1470-80. By kind permission of the Earl and Countess of Harewood and the Trustees of the Harewood House Trust

A breakfast viewing hosted by Professor Deborah Swallow in the beautiful setting of The Courtauld Gallery with an introductory talk by Dr Caroline Campbell, Schroder Foundation Curator of Paintings. Focused around The Courtauld's pair of chests which were ordered in 1472 by the Florentine Lorenzo Morelli to celebrate his marriage with Vaggia Nerli, the exhibition explores the Florentine society which produced such treasures.

APRIL

**KNIGHTS AT THE COURTAULD
FAMILY EVENT**

SATURDAY 18 APRIL, 2.00 – 4.00PM

The Courtauld Gallery
*For: Associates, Patrons' Circle and
Director's Circle*

For Samuel Courtauld Society members to introduce their children (aged 4-10 years) or children of friends and family to The Courtauld. Guests will take part in a knight's quest through The Courtauld Gallery with an exciting treasure-trail, imaginative storytelling and creative drawing – all led by a professional artist. The activities will be followed by tea and cake. Teenagers and adult supporters are also very welcome.

MEET AN ARTIST: PETER PAUL RUBENS

TUESDAY 21 APRIL, 6.30 – 8.00PM

The Courtauld Gallery

For: Patrons' Circle and Director's Circle

An opportunity to gain a fascinating insight into the work of a single artist from the collection. Dr Joanna Woodall, Senior Lecturer in Netherlandish art will discuss the work of Peter Paul Rubens, including masterpieces such as *Landscape by Moonlight*.



Peter Paul Rubens, *Landscape by Moonlight*, c1635-40
© The Samuel Courtauld Trust, The Courtauld Gallery, London

COURTAULD EXPERT TOUR: DISCOVER THE NEW MEDIEVAL GALLERY AT THE BRITISH MUSEUM

WEDNESDAY 29 APRIL, 9.00 – 10.00AM

The British Museum

For: Patrons' Circle and Director's Circle

Dr Antony Eastmond, Reader in the History of Byzantine Art at The Courtauld – whose post is funded by your donations this year – will give a tour of the newly opened medieval gallery at the British Museum which displays objects from Europe 1000 – 1500. Dr Antony Eastmond will introduce the new displays and discuss what can be learnt about the medieval world through these objects.



Borradaile Triptych © The Trustees of the British Museum 2008

MAY

COURTAULD EXPERT TOUR: EXPLORE A CONTEMPORARY ART COLLECTION IN CAMBRIDGE

SATURDAY 16 MAY, 2.00 – 5.00PM

New Hall Art Collection, Murray Edwards College, Cambridge

For: Patrons' Circle and Director's Circle

Join Professor Deborah Swallow - Märit Rausing Director at The Courtauld and alumna of New Hall - on a tour of the New Hall Art Collection at Murray Edwards College. The tour will be taken by Amanda Rigler, Art Curator and Outreach Manager. This unusual collection contains nearly 350 contemporary works by distinguished



Lucy Jones, *Lucy Jones (detail)*, 1987

women including Maggi Hambling, Barbara Hepworth and Paula Rego. After the tour, members are invited to tea in the Long Room.

'MEET A DRAWING' IN THE COURTAULD'S PRINTS AND DRAWINGS ROOM

WEDNESDAY 20 MAY, 6.30 – 8.00PM

The Courtauld Institute of Art
For: Patrons' Circle and Director's Circle

Visit The Courtauld's wonderful Prints and Drawings Room with Dr Stephanie Buck, Curator of Drawings. Members will have the opportunity to study a number of drawings from The Courtauld's outstanding collections which are not normally on view including Mantegna's Studies for Christ at the Column.



Andrea Mantegna, *Studies for Christ at the Column* (detail), c1460
© The Samuel Courtauld Trust, The Courtauld Gallery, London

JUNE

PRIVATE COLLECTION VISIT TO THE HOME AND STUDIO OF TIM GOSLING

THURSDAY 4 JUNE, 6.30 – 8.00PM

The home of Tim Gosling, Clapham Old Town
For: Director's Circle

An evening with Courtauld supporter and bespoke furniture designer, Tim Gosling, where members can view his home and studio containing rare books relating to the architectural elements used in his furniture designs. There will be a brief talk by Tim about the practicalities and process behind modern bespoke furniture design and its



use of wood and materials; as well as a glimpse into the parallel use of 3D computer modelling programmes alongside sketch drawings, showing the genesis of creating a piece of furniture.

CHAMPAGNE PRIVATE VIEW OF BEYOND BLOOMSBURY: DESIGNS OF THE OMEGA WORKSHOPS 1913-19

LEAD SUPPORTER – THE FRIENDS OF THE COURTAULD

WEDNESDAY 17 JUNE, 5.30 – 6.30PM

The Courtauld Gallery
For: Patrons' Circle and Director's Circle

Patrons' Circle and Director's Circle members of the Samuel Courtauld Society have an exclusive viewing of the exhibition prior to the start of the main Private View. This exhibition – generously supported by your donations this year – explores Roger Fry's experimental design cooperative, The Omega Workshops, where Bloomsbury's most avant-garde artists worked together on the production of radical abstract textiles, ceramics, furniture.



Omega Workshops (attributed to Duncan Grant), *Abstract Design, possibly for a Rug* (detail), c.1913-14 © The Samuel Courtauld Trust, The Courtauld Gallery, London

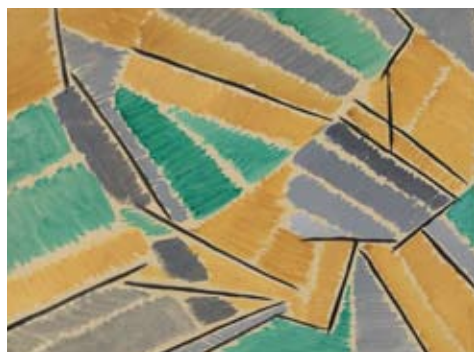
**PRIVATE VIEW OF BEYOND BLOOMSBURY:
DESIGNS OF THE
OMEGA WORKSHOPS 1913-19
LEAD SUPPORTER – THE FRIENDS OF
THE COURTAULD**

WEDNESDAY 17 JUNE, 6.30 – 8.30PM

The Courtauld Gallery

*For: Associates, Patrons' Circle and
Director's Circle*

All members are invited to join us for Private View night and see the new exhibition *Beyond Bloomsbury: Designs of the Omega Workshops 1913-19* before it opens to the public. Founded by Roger Fry in 1913, The Omega Workshops produced ceramics, furniture, textiles and rugs. The leading members of the group were Bloomsbury artists Vanessa Bell and Duncan Grant, and works by these artists and other avant-garde artists will be shown in the exhibition.



Omega Workshops (Vanessa Bell), *Abstract Design* (detail), c.1914
© The Samuel Courtauld Trust, The Courtauld Gallery, London

**DIRECTOR'S BREAKFAST VIEW OF
BEYOND BLOOMSBURY: DESIGNS OF
THE OMEGA WORKSHOPS 1913-19
LEAD SUPPORTER – THE FRIENDS OF
THE COURTAULD**

WEDNESDAY 24 JUNE, 8.00 – 9.45AM

The Courtauld Gallery

For: Patrons' Circle and Director's Circle

A breakfast viewing of *Beyond Bloomsbury: Designs of the Omega Workshops 1913-19* hosted by Professor Deborah Swallow in the wonderful setting of The Courtauld Gallery with an introductory talk on the exhibition by Dr Alexandra Gerstein, Curator of Sculpture and Decorative Arts to give you an insight into this fascinating show. The Courtauld's unique holding of designs from the Omega Workshops are at the heart of the exhibition.

THE FRIENDS OF THE COURTAULD

All Samuel Courtauld Society membership payments are made to the charity, The Friends of The Courtauld. Each year, The Friends of The Courtauld makes a grant to The Courtauld to support a selection of the Institute's core priorities as defined by the Board of Governors.

This year the projects which will be supported are: the establishment of The Courtauld Archive which will secure the valuable history of the Institute; The Omega Workshops Exhibition to be shown from June to September 2009; the post of Byzantine specialist Dr Antony Eastmond, Reader in History of Byzantine Art at The Courtauld; Student travel bursaries which give students the opportunity to go on an intensive study trip; the Book Library; The Friends Lecture Series.

EVENT BOOKING FORM

EVENT	DATE	NO. OF PLACES AND NAMES OF ANY GUESTS
CHAMPAGNE PRIVATE VIEW	Weds 11 Feb	
PRIVATE VIEW	Weds 11 Feb	
MEET A PAINTING	Weds 18 Feb	
PRIVATE ART COLLECTION VISIT	Thurs 19 Mar	
DIRECTOR'S BREAKFAST	Tues 24 Mar	
FAMILY EVENT	Sat 18 Apr	
MEET AN ARTIST	Tues 21 Apr	
TOUR WITH A COURTAULD EXPERT	Wed 29 Apr	
TOUR WITH A COURTAULD EXPERT	Sat 16 May	
MEET A DRAWING	Weds 20 May	
PRIVATE ART COLLECTION VISIT	Thurs 4 June	
CHAMPAGNE PRIVATE VIEW	Weds 17 June	
PRIVATE VIEW	Weds 17 June	
DIRECTOR'S BREAKFAST	Weds 24 June	

YOUR DETAILS

Name
Address
Email
Telephone

GUEST(S) DETAILS

Name(s)
Address
Email
Telephone

Unless you hear to the contrary, your booking is confirmed and we look forward to seeing you at the event.

TO RSVP

Invitations and full information on all these events will be mailed or emailed to you four weeks prior to the event. To RSVP, please contact Georgina Cox – georgina.cox@courtauld.ac.uk / rsvp@courtauld.ac.uk or call +44 (0) 207 848 2056

TO JOIN

If you are not a Samuel Courtauld Society member, but would like to join and attend these events, please do contact us at the address below:

Jemma Tabraham /
Kate Knight (from May 2009)
The Courtauld Institute of Art, Somerset
House, Strand, London WC2R 0RN
jemma.tabraham@courtauld.ac.uk /
kate.knight@courtauld.ac.uk
020 7848 2194